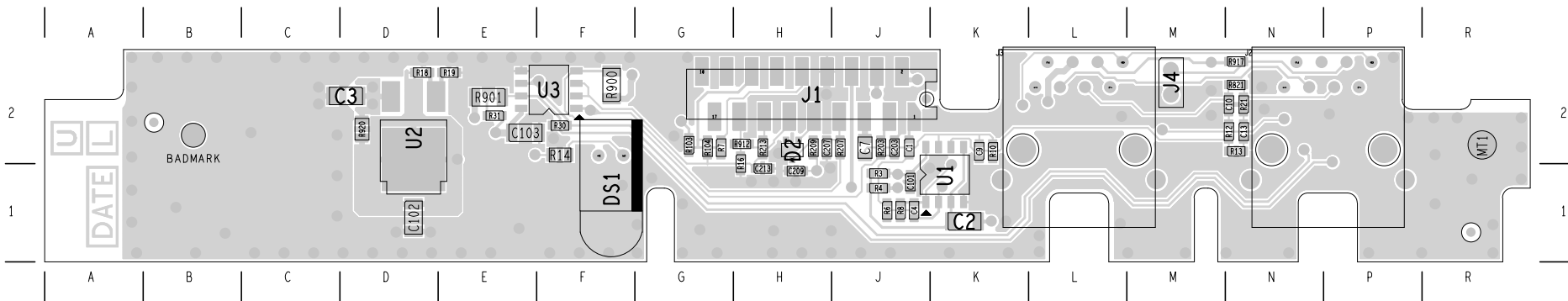


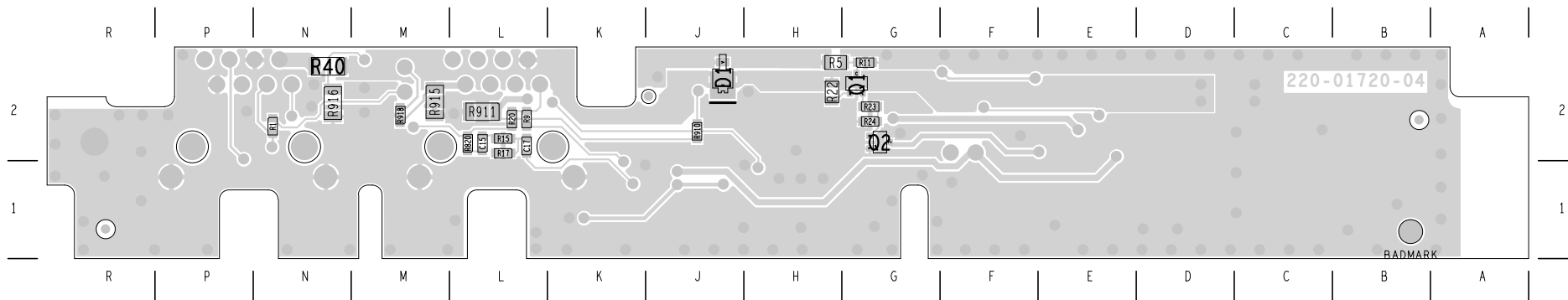
<p><b>MULTI-HEAD CONFIG</b></p>		<p><b>MULTI-RADIO CONFIG</b></p>		<p><b>TELEMETRY HEAD</b></p> <p>FIT AS 0 OHM LINK: R900, R901, R910, R912, R916, 918</p> <p>FIT AS 560 OHM: R920</p> <p>CHANGE TO 0 OHM LINK: C1, R6, R8, R9 C10, R12, R10, C7 (NOTE DIFFERENT PAD SIZES)</p> <p>DO NOT INSTALL: U1, U2, U3, J2 R911, R915, R917 R16, R15, R13, R21, R30, R31 R1, R2, R3, R4, R104, R18, R19, R16, R213 C4, C17, C15, C13, C9, C101, C2 C102, C213</p>	
---------------------------------	--	----------------------------------	--	--	--

© TAIT ELECTRONICS		A2
TM8200 RADIO REMOTE PCB		
IPN: 220-01720-03	ISSUE: A	VARIANT NUMBER: ?
FILE DATE: Thu Nov 10 08:43:27 2005		
ENGINEER: DAVID SLATEN	FILE NAME: 220_01720	SHEET NUMBER: 1 OF 1

04A	INCLUDE CHANGES REQUIRED FOR FESA	EDWIN T	CHRIS K	DAVE E	PETER C	15/11/05
REV/ISS	AMENDMENTS	DRAWN	CHKD	D.O.	APVD	DATE



TAIT ELECTRONICS	IPN: 220-01720-04	ISS: A	DATE: 10Nov05	SCALE: NTS
TM8200 Radio Remote LAYOUT-PRIMARY-SIDE				



TAIT ELECTRONICS	IPN: 220-01720-04	ISS: A	DATE: 10Nov05	SCALE: NTS
TM8200 Radio Remote LAYOUT-SECONDARY-SIDE				